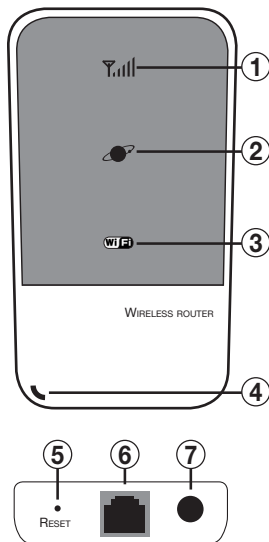




ROUTER

***MANUALE ISTRUZIONI • INSTRUCTIONS MANUAL
NOTICE DE MONTAGE ET D'EMPLOI • GEBRAUCHSANWEISUNGEN
MANUAL DE INSTRUCCIONES***

VM 314



1 LED INTENSITÀ SEGNALE

- ROSSO FISSO Segnale assente, SIM card non presente o non inserita correttamente
- ROSA FISSO Segnale debole • BLU FISSO Segnale buono • SPENTO Router spento

2 LED STATO RETE

- VERDE FISSO La porta WAN è collegata ad un cavo LAN
- VERDE LAMPEGGIO La porta WAN è correttamente collegata alla rete LAN
- BLU LAMPEGGIO (1 al secondo) Dispositivo avviato o in stand-by
- BLU LAMPEGGIO (rapido) Segnale 3G in connessione
- BLU FISSO Segnale 3G connesso e funzionante
- SPENTO Router spento

3 LED STATO WIRELESS

- BLU FISSO Segnale WI-FI avviato • SPENTO Router spento
- BLU LAMPEGGIO WI-FI connesso e avviata trasmissione dati

4 LED STATO ALIMENTAZIONE

- VERDE FISSO Batteria in carica • SPENTO Batteria carica o dispositivo spento
- BLU FISSO Massimo livello di carica • ROSA FISSO Medio livello di carica
- ROSSO FISSO Basso livello di carica

TASTI E CONNESSIONI

5 Tasto RESET Inserire un oggetto appuntito e tenere premuto per oltre 4 secondi, fare attenzione al pannello frontale del router e rilasciare il tasto solo quando i LED lampeggiano simultaneamente. Il sistema sarà riportato alle impostazioni di fabbrica.

6 Porta RJ45 LAN

7 Tasto accensione/spegnimento. Premere per circa 4 secondi.

REQUISITI DI SISTEMA

Assicurarsi che il computer soddisfi le seguenti caratteristiche minime: **CPU** Minimo 500MHz • **Hard Disk** 50 Mb di spazio libero • **Sistema operativo** Windows 7/Vista/XP sp2 • **Display** Risoluzione minima 800x600 • **Interfaccia** USB 2.0 o superiore **Browser** Internet Explorer 6/7/8, Safari 3/4/5, Firefox, Chrome

PREPARAZIONE DEL ROUTER

Aprire il coperchio posteriore del router ed inserire la SIM card nello slot dedicato.

In caso si volesse utilizzare la funzione “file sharing” per condividere files audio e video sui dispositivi connessi, caricare i file su una micro sd card e inserirla nello slot vicino alla SIM card.

Chiudere il coperchio posteriore e mettere sotto carica la batteria tramite il cavo USB in dotazione.

CONNESSIONE DISPOSITIVI TRAMITE WI-FI

Accendere il router premendo il tasto per almeno 4 secondi.

Effettuare la ricerca WI-FI dal dispositivo fino ad individuare Phonocar VM314.

Connettersi al router e quando richiesta immettere la password “12345678”, in seguito sarà possibile modificarla.

ATTIVAZIONE MODEM 3G PER IL PROPRIO GESTORE TELEFONICO

Aprire il proprio browser internet. Digitare nella barra degli indirizzi la seguente stringa <http://192.168.8.1>

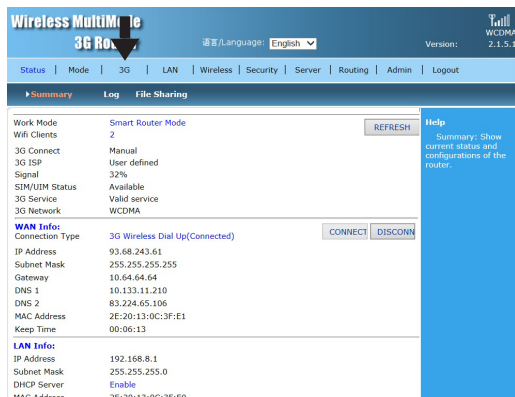
Entrare nella gestione del dispositivo digitando le credenziali:

USER: admin PASSWORD: admin

Una volta entrati nella gestione dispositivo sarà possibile configurare il proprio gestore telefonico per la connessione 3G.



ATTIVAZIONE MODEM 3G PER IL PROPRIO GESTORE TELEFONICO



Wireless MultiMode 3G Router

语言/Language: English Version: WCDMA 2.1.5.1

Status | Mode | **3G** | LAN | Wireless | Security | Server | Routing | Admin | Logout

Summary Log File Sharing

Work Mode: Smart Router Mode REFRESH

Wifi Clients: 2

3G Connect: Manual

3G ISP: User defined

Signal: 32%

SIM/UM Status: Available

3G Service: Valid service

3G Network: WCDMA

WAN Info:

Connection Type: 3G Wireless Dial Up(Connected) CONNECT DISCONN

IP Address: 93.68.243.61

Subnet Mask: 255.255.255.255

Gateway: 10.64.64.64

DNS 1: 10.133.11.210

DNS 2: 83.224.65.106

MAC Address: 2E:20:13:0C:3F:E1

Keep Time: 00:06:13

LAN Info:

IP Address: 192.168.8.1

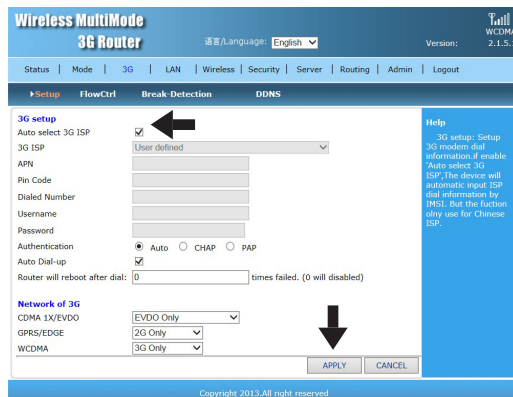
Subnet Mask: 255.255.255.0

DHCP Server: Enable

MAC Address: 2E:20:13:0C:3F:E0

Help
Summary: Show current status and configurations of the router.

Selezionare 3G nel menù per la configurazione della SIM card del proprio gestore.



Wireless MultiMode 3G Router

语言/Language: English Version: WCDMA 2.1.5.1

Status | Mode | **3G** | LAN | Wireless | Security | Server | Routing | Admin | Logout

Setup FlowCtrl Break Detection DDNS

3G setup

Auto select 3G ISP ☒ 3G setup: Setup 3G modem dial information, if enable 'Auto select 3G ISP', the device will automatic input ISP dial information by IMSI. But the function only use for Chinese ISP.

3G ISP: User defined

APN:

Pin Code:

Dialed Number:

Username:

Password:

Authentication: ☒ Auto ☐ CHAP ☐ PAP

Auto Dial-up: ☒

Router will reboot after dial: 0 times failed. (0 will disabled)

Network of 3G

CDMA 1X/EVDO: EVDO Only

GPRS/EDGE: 2G Only

WCDMA: 3G Only

APPLY CANCEL

Copyright 2013. All right reserved

Deselezionare la spunta alla voce "Auto Select 3G ISP" se presente e scegliere il proprio gestore telefonico in ordine di paese di appartenenza. Premere l'icona "APPLY" per confermare.

SELEZIONE MODALITÀ UTILIZZO DEL ROUTER VM314

Wireless MultiMode Router

语言/Language: English Version: WCDMA 2.1.5.1

Status | Mode | 3G | LAN | Wireless | Security | Server | Routing | Admin | Logout

► Mode

Device Work Mode

- ☒ Smart Router Mode
Router will smart select work mode by ethernet port or USB port plugin.
- ☐ 3G Wireless Router Mode
Wireless and ethernet port connect to local network, The embbed 3G USB modem connect to internet.
- ☐ Standard Wireless Router Mode
Wireless connect to local network, The ethernet connect to internet.
- ☐ Wireless AP Client Mode
Ethernet Wireless connect PC or local network, Another Wireless Interface work for a WAN port connect to other wireless AP or router.

APPLY CANCEL

Help

WorkMode: Choice the device work mode, if choice 'Smart Mode', The device will detect wan mode automatically. The priority as: 3G --> DHCP --> PPPoE --> AP-Client. Please input parameters in different mode at first.

Copyright 2013.All right reserved

Selezionare “MODE” nel menù di configurazione. Individuare la modalità di utilizzo desiderata tra quelle indicate:

- **SMART ROUTER MODE** Il router individuerà automaticamente la modalità da utilizzare in base alla presenza o meno del cavo LAN: se è stato collegato il cavo il 3G viene scollegato e il VM314 funzionerà come access point, diversamente il 3G rimarrà attivo e la connessione sarà utilizzata per il traffico dati.
- **3G WIRELESS ROUTER MODE** Il router permetterà la fruibilità dei dati internet sia wireless che cablato in connessione 3G.
- **STANDARD WIRELESS ROUTER MODE** Questa modalità di accesso permette la funzionalità DHCP, static address, static IP e PPOE/ADSL. Se l'ambiente internet è in modalità di ingresso dinamico DHCP non è necessario selezionare la modalità di accesso, posizionarsi su SMART ROUTER MODE in modo da riconoscere automaticamente le impostazioni.
- **WIRELESS AP CLIENT MODE** Sia la connessione wireless che la cablata possono diventare access point e l'interfaccia wireless si può connettere con altri AP come client.

IMPOSTAZIONI WIRELESS

Wireless MultiMode 3G Router

Language: English Version: WCDMA 2.1.5.1

Status | Mode | 3G | LAN | **Wireless** | Security | Server | Routing | Admin | Logout

Basic Security Advanced WDS Station List Mac Access

Basic

Wireless Enabled ☒

802.11 Mode 11b/g/n mixed mode

SSID Phonocar VM314

Do Not Broadcast SSID ☐

Channel 2437MHz (Channel 6)

HT Channel 2417MHz (Channel 2)

HT Data Rates Auto

Channel Bandwidth ☐ 20 ☒ 20/40

Guard Interval ☐ Long ☒ Auto

20/40 BSS Coexistence ☐ Disable ☒ Enable

40MHz Intolerant ☒ Disable ☐ Enable

Help Basic: Setup AP SSID, 801.11n/h/g mode.

APPLY CANCEL

Copyright 2013.All right reserved

- **WIRELESS ENABLED** Abilita/Disabilita funzionalità wireless
- **SSID** Nome visualizzato nella ricerca dispositivi wireless
- **DO NOT BROADCAST** Non visualizza il router nella ricerca wireless
- **CHANNEL** Seleziona un canale di frequenza per la trasmissione dati
- **HT CHANNEL** Seleziona un canale di frequenza per la trasmissione dati
- **HT DATA RATE** Selezionare AUTO
- **CHANNEL BANDWIDTH** Selezione banda del canale
- **GUARD INTERVAL** Selezionare AUTO

Wireless MultiMode 3G Router

Language: English Version: WCDMA 2.1.5.1

Status | Mode | 3G | LAN | **Wireless** | Security | Server | Routing | Admin | Logout

Basic Security Advanced WDS Station List Mac Access

Security

Security Mode WPA-PSK/WPA2-PSK

WPA-PSK

Encrypt Type ☐ TKIP ☒ AES ☐ TKIPAES

WPA-PSK Key 12345678

(8-63 ASCII characters, or 64 hexadecimal characters <0-9 or a-f, A-F>)

Rekey Interval 3600 second(s)

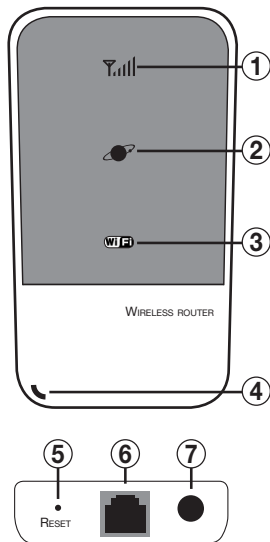
Help Security: Setup wireless AP security, use WPA2PSK, AES is good choice.

APPLY CANCEL

Copyright 2013.All right reserved

IMPOSTAZIONI SICUREZZA WIRELESS

Impostare la modalità di sicurezza per l'accesso wireless e la password desiderata.



1 LED SIGNAL-INTENSITY

- RED FIX Signal absent, SIM card not present or not correctly inserted
- ROSE FIX Signal weak • BLUE FIX Signal good • SWITCHED OFF Router switched-off.

2 LED ELECTRICITY-STATUS

- GREEN FIX WAN-port connected to a LAN-cable
- GREEN FLASHING WAN-port is correctly connected to the LAN-network
- BLUE FLASHING (1 flash per second) Unit switched-on or in stand-by
- BLUE FLASHING (rapidly flashing) 3G-signal being connected
- BLUE FIX 3G-signal connected and operative
- Led SWITCHED OFF Router switched-off.

3 LED WIRELESS-STATUS

- BLUE FIX WI-FI-signal started
- BLUE FLASHING WI-Fi connected and Data-Transfer started
- Led SWITCHED OFF Router switched-off.

4 LED POWER-STATUS

- GREEN FIX Battery being recharged • SWITCHED OFF Battery full or Unit switched-off.
- BLUE FIX Battery-charge at max. Level • ROSE FIX Battery-charge at medium Level
- RED FIX Battery-charge at low Level

KEYS AND CONNECTIONS

5 RESET-key Insert a pointed object and keep pressed for more than 4 seconds. Treat front-panel of Router with utmost care and release the Reset-key only when the LEDs start flashing simultaneously. The system will automatically resume the Factory Settings.

6 Port RJ45 LAN

7 Power-key. To switch Unit ON/OFF, Press for about 4 seconds.

SYSTEM-REQUIREMENTS

Please make sure that your PC meets the following minimum Features: **CPU** Minimum 500MHz

Hard Disk 50 Mb free space • **Operation-System** Windows 7/Vista/XP sp2

Display Minimum Resolution 800x600 • **Interface** USB 2.0 or more • **Browser** Internet Explorer 6/7/8, Safari 3/4/5, Firefox, Chrome

PREPARING THE ROUTER

Open the rear-cover on the Router and insert the SIM-card into the related slot.

If you wish to make use of the function “file sharing”, in order to share Audio/Video-files amongst the connected devices, charge the files onto a micro-SD and insert the micro-SD into the slot next to the SIM-card.

Close rear-cover again and use the supplied USB-cable to charge the Battery.

CONNECTING DEVICES THROUGH WI-FI

Switch-on the Router by pressing the key for at least 4 seconds. Effect WI-FI-research from the device, until you find Phonocar VM314.

Connect to the Router and, on request, digit the password “12345678”. From that moment, you can modify the password.

ACTIVATING THE 3G-MODEM IN RELATION TO YOUR MOBILE-PHONE COMPANY

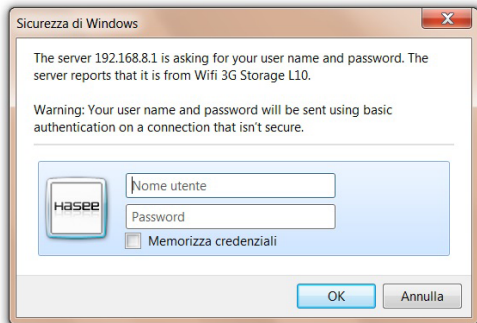
Open your Internet-browser.

On the address-line, digit the following code <http://192.168.8.1>

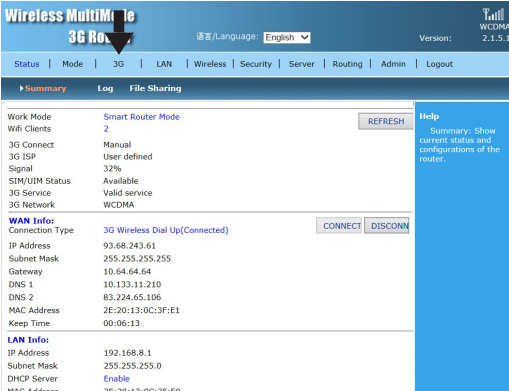
Enter the device-management by typing the following data: **USER:**

admin **PASSWORD: admin**

As soon as you enter into the device-management, you can set your mobile-phone company for the 3G-connection.



ACTIVATING THE 3G-MODEM IN RELATION TO YOUR MOBILE-PHONE COMPANY



Wireless MultiMode 3G Router 语言/Language: English Version: WCDMA 2.1.5.1

Status | Mode | **3G** | LAN | Wireless | Security | Server | Routing | Admin | Logout

► Summary Log File Sharing

Work Mode	Smart Router Mode	REFRESH
Wifi Clients	2	
3G Connect	Manual	
3G ISP	User defined	
Signal	32%	
SIM/UM Status	Available	
3G Service	Valid service	
3G Network	WCDMA	

WAN Info: Connection Type: 3G Wireless Dial Up(Connected) **CONNECT** **DISCONN**

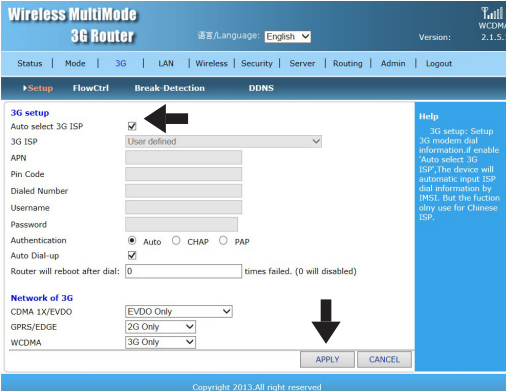
IP Address	93.68.243.61
Subnet Mask	255.255.255.255
Gateway	10.64.64.64
DNS 1	10.133.11.210
DNS 2	83.224.65.106
MAC Address	2E:20:13:0C:3F:E1
Keep Time	00:06:13

LAN Info:

IP Address	192.168.8.1
Subnet Mask	255.255.255.0
DHCP Server	Enable
MAC Address	2E:20:13:0C:3F:E0

Help Summary: Show current status and configurations of the router.

Select 3G within the above Menu, and configure the SIM-card of your phone-company.



Wireless MultiMode 3G Router 语言/Language: English Version: WCDMA 2.1.5.1

Status | Mode | **3G** | LAN | Wireless | Security | Server | Routing | Admin | Logout

► Setup FlowCtrl Break Detection DDNS

3G setup

Auto select 3G ISP ☒ (Arrow points here)

3G ISP: User defined

APN:

Pin Code:

Dialed Number:

Username:

Password:

Authentication: ☒ Auto ☐ CHAP ☐ PAP

Auto Dial-up: ☒

Router will reboot after dial: times failed. (0 will disabled)

Network of 3G

CDMA 1X/EVDO: EVDO Only

GPRS/EDGE: 2G Only

WCDMA: 3G Only

APPLY **CANCEL** (Arrow points to APPLY)

Help 3G setup: Setup 3G modem dial information, if enable 'Auto select 3G ISP', The device will automatic input ISP dial information by IMSI. But the fuction only use for Chinese ISP.

Copyright 2013. All right reserved

Untick the function "Auto Select 3G ISP" and choose your phone-company in accordance with your Country. To confirm, press "APPLY".

SELECTING THE OPERATION-MODE OF ROUTER VM314

Wireless MultiMode Router

语言/Language: English Version: WCDMA 2.1.5.1

Status | **Mode** | 3G | LAN | Wireless | Security | Server | Routing | Admin | Logout

► Mode

Device Work Mode

- ☒ Smart Router Mode
Router will smart select work mode by ethernet port or USB port plugin.
- ☐ 3G Wireless Router Mode
Wireless and ethernet port connect to local network, The embded 3G USB modem connect to internet.
- ☐ Standard Wireless Router Mode
Wireless connect to local network, The ethernet connect to internet.
- ☐ Wireless AP Client Mode
Ethernet Wireless connect PC or local network, Another Wireless Interface work for a WAN port connect to other wireless AP or router.

APPLY CANCEL

Help

WorkMode: Choice the device work mode, if choice 'Smart Mode', The device will detect wan mode automatically. The priority as: 3G --> DHCP --> PPPoE --> AP-Client. Please input parameters in different mode at first.

Copyright 2013.All right reserved

Select “MODE” from the Menu, on top of the configuration-page. Choose the wanted Operation-Mode amongst the following:

- **SMART ROUTER MODE** The Router will automatically locate the necessary mode, depending on the presence or non-presence of the LAN-cable. When LAN-cable is connected, the 3G will disconnect and the VM314 will act as an Access-Point. When LAN-cable is not connected, 3G remains active and the connection will be used for the data-transfer.
- **3G WIRELESS ROUTER MODE** The Router ensures the availability of the Internet-Data, wired and wireless, through the 3G-connection.
- **STANDARD WIRELESS ROUTER MODE** This access-Mode allows the functions DHCP, static address, static IP and PPOE/ADSL. When your Internet-ambient is set on dynamic DHCP input-mode, there is no need to select the access-mode. Simply choose SMART ROUTER MODE, and the settings will automatically be found.
- **WIRELESS AP CLIENT MODE** Wired and wireless connections both become Access Points and the wireless-Interface can connect with other AP-clients.

WIRELESS SETTINGS

Wireless MultiMode 3G Router

Language: English Version: WCDMA 2.1.5.1

Status | Mode | 3G | LAN | **Wireless** | Security | Server | Routing | Admin | Logout

Basic Security Advanced WDS Station List Mac Access

Basic

Wireless Enabled ☒

802.11 Mode 11b/g/n mixed mode

SSID Phonocar VM314

Do Not Broadcast SSID ☐

Channel 2437MHz (Channel 6)

HT Channel 2417MHz (Channel 2)

HT Data Rates Auto

Channel Bandwidth ☐ 20 ☒ 20/40

Guard Interval ☐ Long ☒ Auto

20/40 BSS Coexistence ☐ Disable ☒ Enable

40MHz Intolerant ☒ Disable ☐ Enable

APPLY CANCEL

Copyright 2013.All right reserved

Help Basic: Setup AP SSID, 801.11n/b/g mode.

Wireless MultiMode 3G Router

Language: English Version: WCDMA 2.1.5.1

Status | Mode | 3G | LAN | **Wireless** | Security | Server | Routing | Admin | Logout

Basic **Security** Advanced WDS Station List Mac Access

Security

Security Mode WPA-PSK/WPA2-PSK

WPA-PSK

Encrypt Type ☐ TKIP ☒ AES ☐ TKIPAES

WPA-PSK Key 12345678

(8-63 ASCII characters, or 64 hexadecimal characters <0-9 or a-f, A-F>)

Rekey Interval 3600 second(s)

APPLY CANCEL

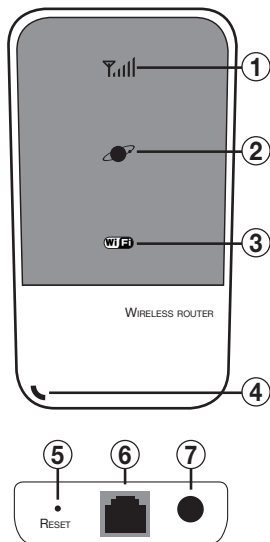
Copyright 2013.All right reserved

Help Security: Setup wireless AP security, use WPA2PSK, AES is good choice.

WIRELESS SECURITY-SETTINGS

Set the security-mode for wireless-access and your own password.

- **WIRELESS ENABLE** Activate/Deactivate wireless-function
- **SSID** visualized Name when searching wireless-devices
- **DO NOT BROADCAST Router NOT visualized during wireless-research**
- **CHANNEL** Selection of Frequency-channel for data-transfer
- **HT CHANNEL** Selection of Frequency-channel for data-transfer
- **HT DATA RATE** select AUTO
- **CHANNEL BANDWIDTH** Selection of Channel-Band
- **GUARD INTERVAL** select AUTO



1 LED INTENSITÉ DU SIGNAL

- ROUGE FIXE Signal absent, carte SIM pas présente ou non correctement insérée
- ROSE FIXE Signal faible • BLEU FIXE Signal bon • ETEINT Router éteint

2 LED ÉTAT RÉSEAU

- VERT FIXE Le port WAN est branché à un câble LAN
- VERT CLIGNOTANT Le port WAN est correctement branché au réseau LAN
- BLEU CLIGNOTANT (1 clignotement par seconde) Dispositif allumé ou en stand-by
- BLEU CLIGNOTANT (clignotement rapide) Signal 3G en connexion
- BLEU FIXE Signal 3G connecté et fonctionnant
- ETEINT Router éteint

3 LED ÉTAT WIRELESS (WI FI)

- BLEU FIXE Signale WI-FI activé • BLEU Clignotant WI-FI connecté et transmission de données activé • ETEINT Router éteint

4 LED ÉTAT ALIMENTATION

- VERT FIXE Batterie en charge • ETEINT Batterie chargé ou dispositif éteint
- BLEU FIXE Niveau maximal de recharge • ROSE FIXE Niveau moyen de recharge
- ROUGE FIXE Bas niveau de recharge

TOUCHES ET CONNEXIONS (IMAGES LATÉRALE)

5 Touche RESET Insérer un objet pointilleux et faire pression pour plus de 4 secondes, faire attention au panneau du router et lâcher la touche seulement lorsque les LED clignotent simultanément. Les réglages d'origine seront restaurés.

6 Port RJ45 LAN

7 Touche allumage appuyer pour environ 4 secondes la touche pour allumer ou éteindre le dispositif.

CARACTÉRISTIQUES DU SYSTÈME

Se rassurer que l'ordinateur possède les caractéristiques minimales suivantes: **CPU** Minimum 500MHz • **Hard Disk** 50 Mb d'espace disponible • **Système d'exploitation** Windows 7/Vista/XP sp2 • **Afficheur** Résolution minimum 800x600 • **Interface** USB 2.0 ou supérieur • **Browser** Internet Explorer 6/7/8, Safari 3/4/5, Firefox, Chrome.

PRÉPARATION ROUTER

Ouvrir la coque postérieure du router et insérer la Carte SIM dans le slot dédié.

En cas d'utilisation de la fonction "file sharing" pour le partage des fichiers audio et vidéo sur les dispositifs connectés, télécharger le fichiers sur une micro Carte SD et l'insérer dans le slot à côté de la Carte SIM.

Fermer la coque postérieure et recharger la batterie grâce au câble USB offert.

CONNEXIONS DISPOSITIFS À TRAVERS WI-FI

Allumer le router en appuyant la touche pour au moins 4 secondes. Faire la recherche WI-FI sur le dispositif jusqu'à trouver Phonocar VM314. Se Connecter au router et insérer le mot de passe "12345678" quand c'est demandé; vous pourrez le changer après.

ACTIVATION MODEM 3G DE SON OPÉRATEUR TÉLÉPHONIQUE

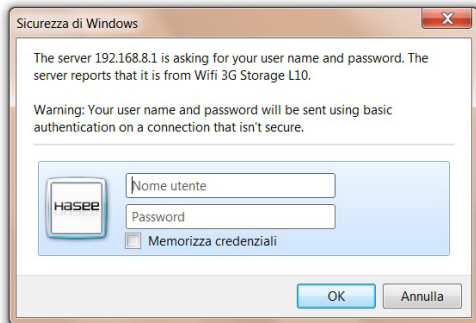
Ouvrir son browser internet.

Taper <http://192.168.8.1> dans la barre des adresses

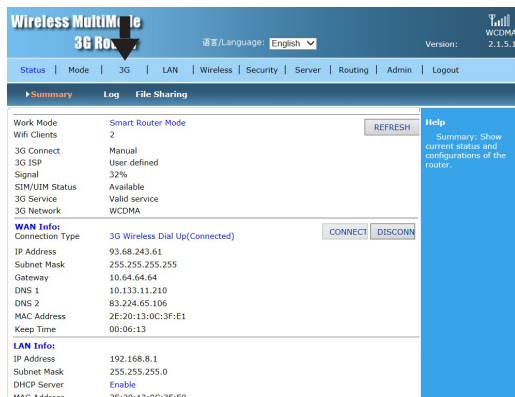
Entrer dans la gestion du dispositif en insérant les coordonnées :

USER: admin MOT DE PASSE: admin

Une fois entré dans la gestion du dispositif, vous pourrez configurer votre opérateur pour la connexion 3G



ACTIVATION MODEM 3G DE SON OPÉRATEUR TÉLÉPHONIQUE



Wireless MultiMode 3G Router

语言/Language: English Version: WCDMA 2.1.5.1

Status | Mode | **3G** | LAN | Wireless | Security | Server | Routing | Admin | Logout

Summary Log File Sharing

Work Mode: Smart Router Mode REFRESH

Wifi Clients: 2

3G Connect: Manual

3G ISP: User defined

Signal: 32%

SIM/UM Status: Available

3G Service: Valid service

3G Network: WCDMA

WAN Info:

Connection Type: 3G Wireless Dial Up(Connected) CONNECT DISCONN

IP Address: 93.68.243.61

Subnet Mask: 255.255.255.255

Gateway: 10.64.64.64

DNS 1: 10.133.11.210

DNS 2: 83.224.65.106

MAC Address: 2E:20:13:0C:3F:E1

Keep Time: 00:06:13

LAN Info:

IP Address: 192.168.8.1

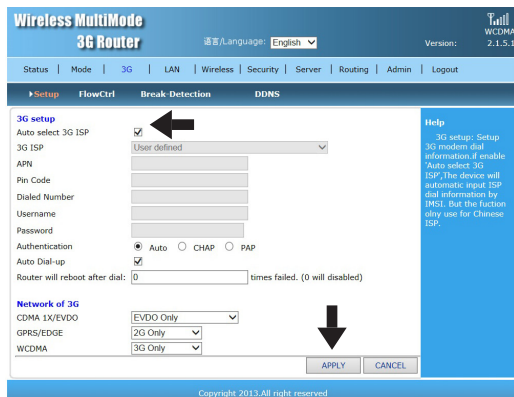
Subnet Mask: 255.255.255.0

DHCP Server: Enable

MAC Address: 2E:20:13:0C:3F:E0

Help
Summary: Show current status and configurations of the router.

Sélectionner 3G dans le menu en haut pour la configuration de la Carte SIM de votre opérateur.



Wireless MultiMode 3G Router

语言/Language: English Version: WCDMA 2.1.5.1

Status | Mode | **3G** | LAN | Wireless | Security | Server | Routing | Admin | Logout

Setup FlowCtrl Break Detection DDNS

3G setup

Auto select 3G ISP ☒ ←

3G ISP: User defined

APN:

Pin Code:

Dialed Number:

Username:

Password:

Authentication: ☒ Auto ☐ CHAP ☐ PAP

Auto Dial-up: ☒

Router will reboot after dial: 0 times failed. (0 will disabled)

Network of 3G

CDMA 1X/EVDO: EVDO Only

GPRS/EDGE: 2G Only

WCDMA: 3G Only

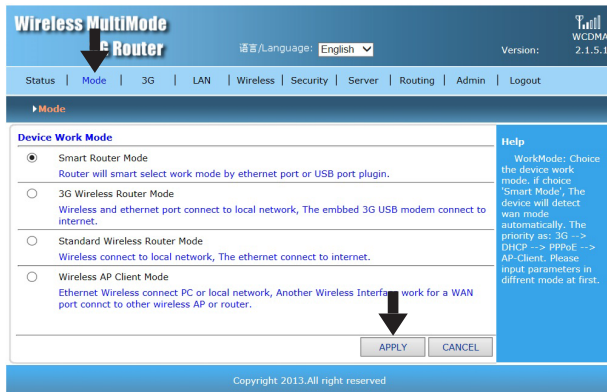
APPLY CANCEL ↓

Help
3G setup: Setup 3G modem dial information, if enable 'Auto select 3G ISP', The device will automatic input ISP dial information by IMSI. But the function only use for Chinese ISP.

Copyright 2013. All right reserved

Désélectionner la case “Auto Select 3G ISP” si celle ci est sélectionnée et choisir votre opérateur téléphonique en fonction de votre pays. Appuyer l’icone “APPLY” pour valider.

SÉLECTION MODALITÉ UTILISATION DU ROUTER VM314



Wireless MultiMode Router

语言/Language: English Version: 2.1.5.1

Status | **Mode** | 3G | LAN | Wireless | Security | Server | Routing | Admin | Logout

► Mode

Device Work Mode

- ☒ Smart Router Mode
Router will smart select work mode by ethernet port or USB port plugin.
- ☐ 3G Wireless Router Mode
Wireless and ethernet port connect to local network, The embded 3G USB modem connect to internet.
- ☐ Standard Wireless Router Mode
Wireless connect to local network, The ethernet connect to internet.
- ☐ Wireless AP Client Mode
Ethernet Wireless connect PC or local network, Another Wireless Interface work for a WAN port connect to other wireless AP or router.

APPLY CANCEL

Help
WorkModes: Choice the device work mode, if choice 'Smart Mode', The device will detect wan mode automatically. The priority as: 3G --> DHCP --> PPPoE --> AP-Client. Please input parameters in different mode at first.

Copyright 2013.All right reserved

Sélectionner “MODE” dans le menu en haut de la page de configuration. Identifier la modalité d’utilisation désiré parmi celle indiquée:

- **SMART ROUTER MODE** Le router identifie automatiquement la modalité à utiliser en fonction de la présence ou non du câble LAN: si le câble est branché et le câble 3G est débranché, le VM314 fonctionne comme point d’accès, contrairement, le 3G restera actif et la connexion sera utilisée pour la transmission de données.
- **3G WIRELESS ROUTER MODE** Le router permettra l’exploitation des données internet soit wireless que câblé à travers la connexion 3G.
- **STANDARD WIRELESS ROUTER MODE** Cette modalité d’accès permet la fonctionnalité DHCP, static address, static IP et PPOE/ADSL. Si le contexte d’internet est en modalité d’entrée dynamique DHCP, le choix de la modalité d’accès n’est pas nécessaire; se placer sur SMART ROUTER MODE de manière à reconnaître automatiquement les réglages.
- **WIRELESS AP CLIENT MODE** Soit la connexion wireless que la connexion câblée peuvent devenir des points d’accès et l’interface wireless peut se connecter avec d’autres AP comme client.

Wireless MultiMode 3G Router

Language: English Version: WCDMA 2.1.5.1

Status | Mode | 3G | LAN | **Wireless** | Security | Server | Routing | Admin | Logout

Basic Security Advanced WDS Station List Mac Access

Basic

Wireless Enabled ☒

802.11 Mode 11b/g/n mixed mode

SSID Phonocar VM314

Do Not Broadcast SSID ☐

Channel 2437MHz (Channel 6)

HT Channel 2417MHz (Channel 2)

HT Data Rates Auto

Channel BandWidth ☐ 20 ☒ 20/40

Guard Interval ☐ Long ☒ Auto

20/40 BSS Coexistence ☐ Disable ☒ Enable

40MHz Intolerant ☒ Disable ☐ Enable

APPLY **CANCEL**

Copyright 2013.All right reserved

- WIRELESS ENABLE Active/Désactive fonctions wireless
- SSID Nom visualisé dans la recherche des dispositifs wireless
- DO NOT BROADCAST Ne visualise pas le router dans la recherche wireless
- CHANNEL Sélectionner une chaine de fréquence pour la transmission des données
- HT CHANNEL Sélectionner une chaine de fréquence pour la transmission de données
- HT DATA RATE Sélectionner AUTO
- CHANNEL BANDWIDTH Sélection bande de la chaine
- GUARD INTERVAL Sélectionner AUTO

Wireless MultiMode 3G Router

Language: English Version: WCDMA 2.1.5.1

Status | Mode | 3G | LAN | **Wireless** | Security | Server | Routing | Admin | Logout

Basic **Security** Advanced WDS Station List Mac Access

Security

Security Mode WPA-PSK/WPA2-PSK

WPA-PSK

Encrypt Type ☐ TKIP ☒ AES ☐ TKIPAES

WPA-PSK Key 12345678

(8-63 ASCII characters, or 64 hexadecimal characters <0-9 or a-f, A-F>)

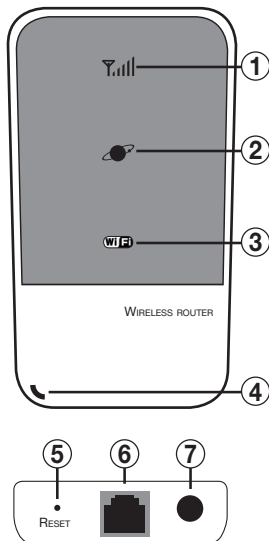
Rekey Interval 3600 second(s)

APPLY **CANCEL**

Copyright 2013.All right reserved

RÉGLAGES DE SÉCURITÉ WIRELESS

Régler la modalité de sécurité pour l'accès wireless et le mot de passe désiré.



1 LED SIGNAL-INTENSITÄT

- ROT FIX Signal abwesend, SIM-Kart fehlt oder falsch eingelegt. • ROSA FIX Signal schwach • BLAU FIX Signal gut • Led ausgeschaltet Router ausgeschaltet.

2 LED NETZ-ZUSTAND

- GRÜN FIX WAN-Pforte mit LAN-Kabel verbunden
- GRÜN BLINKT WAN-Pforte korrekt mit LAN-Netz verbunden
- BLAU BLINKT (1 Mal pro Sekunde) Gerät eingeschaltet oder in Stand-by.
- BLAU BLINKT (schnelles Blinken) 3G-Signal verbindet sich gerade
- BLAU FIX 3G-Signal bereits verbunden und einsatzbereit
- Led ausgeschaltet Router ausgeschaltet.

3 LED WIRELESS-STATUS

- BLAU FIX Wi-Fi-Signal aktiviert • BLAU BLINKT Wi-Fi verbunden und Daten-Übertragung aktiviert • Led ausgeschaltet Router ausgeschaltet.

4 LED BETRIEBSZUSTAND

- GRÜN FIX Batterie wird gerade aufgeladen. • Led ausgeschaltet Batterie voll bzw. Gerät ausgeschaltet. • BLAU FIX Batteriestand voll • ROSA FIX Batteriestand halb-voll.
- ROT FIX Batteriestand Minimum.

TASTEN UND ANSCHLÜSSE (SEITEN-ANSICHT)

5 RESET-Taste. Mit einem spitzen Gegenstand, mindestens 4 Sekunden gedrückt halten. Mit dem Front-Teil des Routers extrem vorsichtig umgehen. Reset-Taste erst dann loslassen, wenn alle Leds gleichzeitig blinken. Das System wird automatisch auf die Fabrik-Einstellungen zurückgreifen.

6 Pforte RJ45 LAN

7 Power-Taste Zum EIN-/AUSSCHALTEN des Geräts, 4 Sekunden gedrückt halten.

SYSTEM-ANFORDERUNGEN

Bitte kontrollieren und sicherstellen, dass Ihr PC folgende Mindest-Anforderungen bietet:

CPU Mindestens 500MHz • **Hard Disk** 50 Mb Freiraum

Betriebs-System Windows 7/Vista/XP sp2 • **Display** Mindest-Auflösung 800x600

Interface USB 2.0 oder mehr • **Browser** Internet Explorer 6/7/8, Safari 3/4/5, Firefox, Chrome

ROUTER-VORBEREITUNG

Rückwärtige Router-Klappe öffnen. SIM-Karte in die entsprechende Öffnung geben. Ist die Funktion "file sharing" gewünscht, d.h. Audio/Video-Dateien unter den angeschlossenen Geräten teilen, die Dateien auf eine Mikro-SD laden und in die Öffnung neben der SIM-Karte eingeben. Rückwärtige Router-Klappe wieder schließen und, mit Hilfe des beigelegten USB-Kabels, Batterie aufladen.

GERÄTE DURCH WI-FI VERBINDEN

Router einschalten, durch 4-Sekunden-Druck auf die Taste. Auf dem Gerät, WI-FI-Suche starten und Phonocar VM314 ausfindig machen. Verbindung zum Router herstellen und, wenn aufgefordert, das Paßwort "12345678" eingeben. Ab jetzt kann man das Paßwort abändern.

3G-MODEM AKTIVIEREN, ENTSPRECHEND IHREM TELEFON-BETREIBER

Internet-Browser öffnen.

Auf der Adreß-Zeile, folgende Code-Nr. eingeben: <http://192.168.8.1>

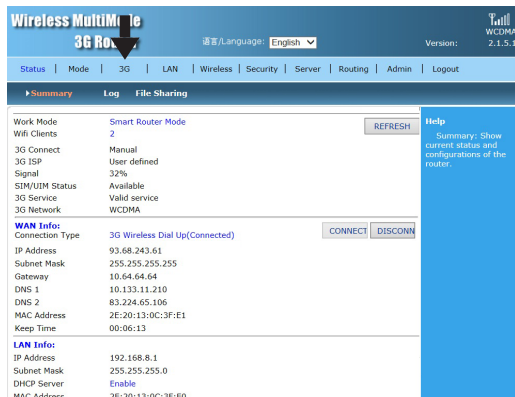
Die Gerät-Verwaltung betreten, durch Eingabe folgender Daten: **USER:**

admin PASSWORD: admin

Innerhalb der Gerät-Verwaltung können Sie Ihren Telefon-Betreiber für die 3G-Verbindung konfigurieren. .



3G-MODEM AKTIVIEREN, ENTSPRECHEND IHREM TELEFON-BETREIBER



Wireless MultiMode 3G Router

语言/Language: English Version: WCDMA 2.1.5.1

Status | Mode | **3G** | LAN | Wireless | Security | Server | Routing | Admin | Logout

Summary | Log | File Sharing

Work Mode	Smart Router Mode	REFRESH
Wifi Clients	2	
3G Connect	Manual	
3G ISP	User defined	
Signal	32%	
SIM/UM Status	Available	
3G Service	Valid service	
3G Network	WCDMA	

WAN Info:

Connection Type: 3G Wireless Dial Up(Connected) CONNECT DISCONN

IP Address: 93.68.243.61

Subnet Mask: 255.255.255.255

Gateway: 10.64.64.64

DNS 1: 10.133.11.210

DNS 2: 83.224.65.106

MAC Address: 2E:20:13:0C:3F:E1

Keep Time: 00:06:13

LAN Info:

IP Address: 192.168.8.1

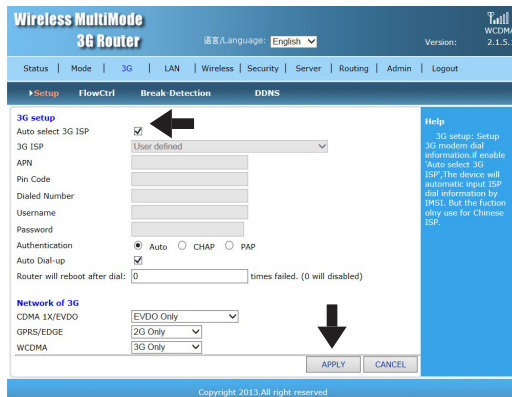
Subnet Mask: 255.255.255.0

DHCP Server: Enable

MAC Address: 2E:20:13:0C:3F:E0

Help
Summary: Show current status and configurations of the router.

Im o.g. Menü, 3G wählen, um die SIM-Karte Ihres Telefon-Betreibers zu konfigurieren.



Wireless MultiMode 3G Router

语言/Language: English Version: WCDMA 2.1.5.1

Status | Mode | **3G** | LAN | Wireless | Security | Server | Routing | Admin | Logout

Setup | FlowCtrl | Break Detection | DDNS

3G setup

Auto select 3G ISP ☒

3G ISP: User defined

APN:

Pin Code:

Dialed Number:

Username:

Password:

Authentication: ☒ Auto ☐ CHAP ☐ PAP

Auto Dial-up: ☒

Router will reboot after dial: 0 times failed. (0 will disabled)

Network of 3G

CDMA 1X/EVDO: EVDO Only

GPRS/EDGE: 2G Only

WCDMA: 3G Only

APPLY CANCEL

Help
3G setup: Setup 3G modem dial information, if enable 'Auto select 3G ISP', The device will automatic input ISP dial information by IMSI. But the fuction only use for Chinese ISP.

Die Funktion "Auto Select 3G ISP" nicht abhaken (Abhake-Zeichen entfernen) und, je nach Land, Ihren Telefon-Betreiber wählen. Zur Bestätigung, auf die Ikone "APPLY" drücken.

ROUTER VM314-BETRIEBSMODUS WÄHLEN

Wireless MultiMode Router

语言/Language: English Version: 2.1.5.1

Status | **Mode** | 3G | LAN | Wireless | Security | Server | Routing | Admin | Logout

► Mode

Device Work Mode

- ☒ Smart Router Mode
Router will smart select work mode by ethernet port or USB port plugin.
- ☐ 3G Wireless Router Mode
Wireless and ethernet port connect to local network, The embbed 3G USB modem connect to internet.
- ☐ Standard Wireless Router Mode
Wireless connect to local network, The ethernet connect to internet.
- ☐ Wireless AP Client Mode
Ethernet Wireless connect PC or local network, Another Wireless Interface work for a WAN port connect to other wireless AP or router.

APPLY CANCEL

Help

WorkModes: Choice the device work mode, if choice 'Smart Mode', The device will detect wan mode automatically. The priority as: 3G --> DHCP --> PPPoE --> AP-Client. Please input parameters in different mode at first.

Copyright 2013.All right reserved

“MODE”

wählen, aus dem Menü oben auf der Konfigurationsseite. Aus folgenden Möglichkeiten, den gewünschten Betriebs-Modus wählen:

- **SMART ROUTER MODE** Der Router stellt automatisch fest, ob das LAN-Kabel präsent ist oder nicht, und wählt konsequent die entsprechende Betriebsart. D.h. wenn das LAN-Kabel angeschlossen ist, wird 3G ausgeschaltet und der VM314-Router funktioniert als Access-Point. Anders herum bleibt 3G aktiviert und die Verbindung wird für den Daten-Verkehr genutzt.
- **3G WIRELESS ROUTER MODE** Der Router ermöglicht den Zugang zu Internet-Daten, per Kabel und kabellos, durch die 3G-Verbindung.
- **STANDARD WIRELESS ROUTER MODE** Hier behält man Zugang zu DHCP, Static address, Static IP und PPOE/ADSL. Wenn der Internet-Zugang auf DHCP dynamisch eingestellt ist, besteht keine Notwendigkeit, den Zugangs-Modus zu wählen. Einfach nur auf SMART ROUTER MODE gehen, und die Einstellungen werden automatisch erkannt.
- **WIRELESS AP CLIENT MODE** Hier werden beide Verbindungen, per Kabel und kabellos, zu Zugangspunkten (Access-Point) und die Wireless-Interface kann mit weiteren AP-Kunden (Clients) die Verbindung aufnehmen.

WIRELESS-EINSTELLUNGEN

Wireless MultiMode 3G Router

Language: English Version: WCDMA 2.1.5.1

Status | Mode | 3G | LAN | **Wireless** | Security | Server | Routing | Admin | Logout

Basic Security Advanced WDS Station List Mac Access

Basic

Wireless Enabled ☒

802.11 Mode 11b/g/n mixed mode

SSID Phonocar VM314

Do Not Broadcast SSID ☐

Channel 2437MHz (Channel 6)

HT Channel 2417MHz (Channel 2)

HT Data Rates Auto

Channel Bandwidth ☐ 20 ☒ 20/40

Guard Interval ☐ Long ☒ Auto

20/40 BSS Coexistence ☐ Disable ☒ Enable

40MHz Intolerant ☒ Disable ☐ Enable

Help Basic: Setup AP SSID, 801.11n/h/g mode.

APPLY CANCEL

Copyright 2013.All right reserved

- **WIRELESS ENABLE** Wireless-Funktion aktivieren/deaktivieren.
- **SSID** ausgewiesener Name, bei Wireless-Geräte-Suche.
- **DO NOT BROADCAST** Router wird NICHT ausgewiesen, bei Wireless-Suche.
- **CHANNEL** Wahl eines Frequenz-Kanals für die Daten-Übertragung.
- **HT CHANNEL** Wahl eines Frequenz-Kanals für die Daten-Übertragung.
- **HT DATA RATE AUTO** wählen.
- **CHANNEL BANDWIDTH** Kanal-Band wählen.
- **GUARD INTERVAL AUTO** wählen.

Wireless MultiMode 3G Router

Language: English Version: WCDMA 2.1.5.1

Status | Mode | 3G | LAN | **Wireless** | Security | Server | Routing | Admin | Logout

Basic **Security** Advanced WDS Station List Mac Access

Security

Security Mode WPA-PSK/WPA2-PSK

WPA-PSK

Encrypt Type ☐ TKIP ☒ AES ☐ TKIPAES

WPA-PSK Key 12345678

(8-63 ASCII characters, or 64 hexadecimal characters <0-9 or a-f, A-F>)

Rekey Interval 3600 second(s)

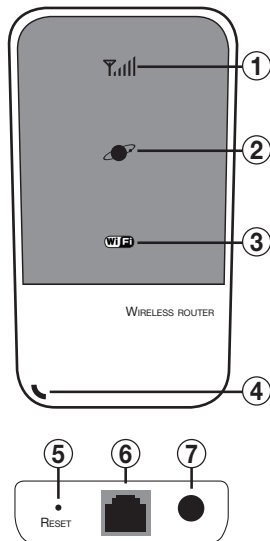
Help Security: Setup wireless AP security, use WPA2PSK, AES is good choice.

APPLY CANCEL

Copyright 2013.All right reserved

WIRELESS SICHERHEITS-EINSTELLUNGEN

Für den Wireless-Zugang, Sicherheits-Modus und gewünschtes Paßwort einstellen.



DESCRIPCIÓN (IMAGEN FRONTAL)

1 LED INTENSIDAD SEÑAL

- ROJO FIJO Señal ausente, SIM card no presente o bien no introducida correctamente
- ROSA FIJO Señal débil • AZUL FIJO Buena señal • APAGADO Router apagado

2 LED ESTADO RED

- VERDE FIJO El puerto WAN está conectado a un cable LAN
- PARPADEO VERDE El puerto WAN está correctamente conectado a la red LAN
- PARPADEO AZUL (1 parpadeo por segundo) Dispositivo iniciado o bien en stand-by
- PARPADEO AZUL (parpadeo rápido) Señal 3G en conexión
- AZUL FIJO Señal 3G conectado y funcionando
- APAGADO Router apagado

3 LED ESTADO WIRELESS

- AZUL FIJO Señal WI-FI iniciado • PARPADEO AZUL WI-FI conectado y transmisión de datos iniciados • APAGADO Router apagado

4 LED ESTADO ALIMENTACIÓN

- VERDE FIJO Batería en recarga • APAGADO Batería cargada o dispositivo apagado
- AZUL FIJO Máximo nivel de carga • ROSA FIJO Medio nivel de carga
- ROJO FIJO Bajo nivel de carga

TECLADO Y CONEXIONES (IMAGEN LATERAL)

5 Tecla RESET. Introducir un objeto puntiagudo y tener presionado durante más de 4 segundos, observar el panel frontal del Router y soltar el pulsante solo cuando los LEDs parpadean de forma simultánea. El sistema volverá a los ajustes de fábrica.

6 Puerto RJ45 LAN

7 Tecla encendido. Presionar durante unos 4 segundos la tecla para encender o apagar el dispositivo.

REQUISITO MÍNIMO DEL SISTEMA

Asegurarse que el ordenador disponga de estos requisitos mínimos : **CPU** Mínimo 500MHz • **Disco duro** 50 Mb de espacio libre

Sistema operativo Windows 7/Vista/XP sp2 • **Display** Resolución mínima 800x600 • **Interfaz** USB 2.0 o superior

Browser Internet Explorer 6/7/8, Safari 3/4/5, Firefox, Chrome

PREPARACIÓN ROUTER

Abrir la tapa posterior del Router e introducir la SIM card en la ranura dedicada. En el caso de que desea utilizar la función “file sharing” para compartir los archivos de audio y video en los dispositivos conectados, cargar los archivos en una micro sd card e introducirla en la ranura cerca de la SIM card. Cerrar la tapa posterior y poner a cargar la batería mediante el cable USB en dotación.

CONEXIONES DISPOSITIVOS MEDIANTE WI-FI

Encender el Router pulsando la tecla durante unos 4 segundos. Efectuar la búsqueda WI-FI desde el dispositivo hasta localizar Phonocar VM314. Conectarse al Router y cuando se pide la clave digitar “12345678”, en seguida será posible modificarla.

ACTIVACIÓN MODEM 3G PARA EL PROPIO GESTOR DE TELEFONÍA

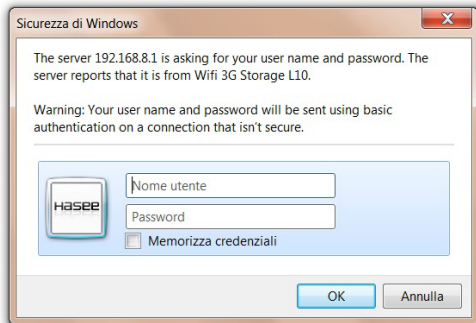
Abrir el propio browser internet.

Digitar en la barra de direcciones la siguiente dirección
<http://192.168.8.1>

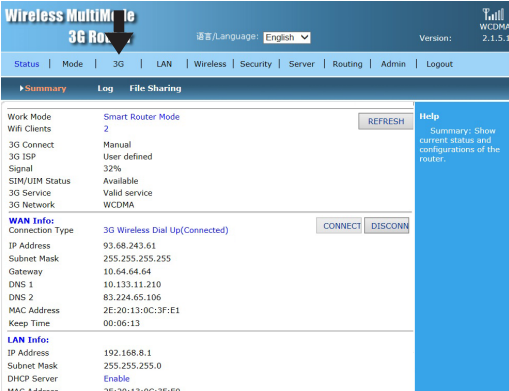
Entrar en la gestión del dispositivo digitando las credenciales

USER: admin PASSWORD: admin

Una vez entrado en la gestión del dispositivo será posible configurar el propio gestor de telefonía para la conexión 3G.



ATTIVAZIONE MODEM 3G PER IL PROPRIO GESTORE TELEFONICO



Wireless MultiMode 3G Router

语言/Language: English Version: WCDMA 2.1.5.1

Status | Mode | **3G** | LAN | Wireless | Security | Server | Routing | Admin | Logout

Summary Log File Sharing

Work Mode: Smart Router Mode REFRESH

Wifi Clients: 2

3G Connect: Manual

3G ISP: User defined

Signal: 32%

SIM/UM Status: Available

3G Service: Valid service

3G Network: WCDMA

WAN Info:

Connection Type: 3G Wireless Dial Up(Connected) CONNECT DISCONN

IP Address: 93.68.243.61

Subnet Mask: 255.255.255.255

Gateway: 10.64.64.64

DNS 1: 10.133.11.210

DNS 2: 83.224.65.106

MAC Address: 2E:20:13:0C:3F:E1

Keep Time: 00:06:13

LAN Info:

IP Address: 192.168.8.1

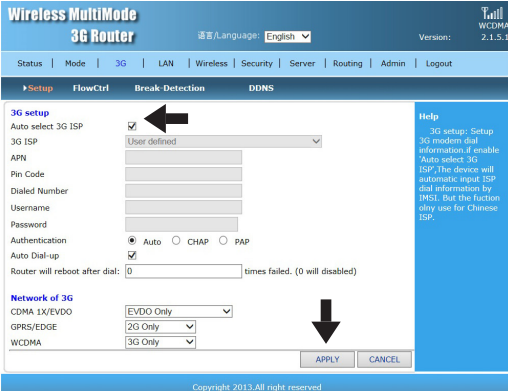
Subnet Mask: 255.255.255.0

DHCP Server: Enable

MAC Address: 2E:20:13:0C:3F:E0

Help
Summary: Show current status and configurations of the router.

Selezionare 3G nel menu in alto per la configurazione della SIM card del proprio gestore.



Wireless MultiMode 3G Router

语言/Language: English Version: WCDMA 2.1.5.1

Status | Mode | **3G** | LAN | Wireless | Security | Server | Routing | Admin | Logout

Setup FlowCtrl Break Detection DDNS

3G setup

Auto select 3G ISP: ☒ ←

3G ISP: User defined

APN:

Pin Code:

Dialed Number:

Username:

Password:

Authentication: ☒ Auto ☐ CHAP ☐ PAP

Auto Dial-up: ☒

Router will reboot after dial: 0 times failed. (0 will disabled)

Network of 3G

CDMA 1X/EVDO: EVDO Only

GPRS/EDGE: 2G Only

WCDMA: 3G Only

APPLY CANCEL ↓

Help
3G setup: Setup 3G modem dial information, if enable 'Auto select 3G ISP', the device will automatic input ISP dial information by IMSI. But the function only use for Chinese ISP.

Copyright 2013. All right reserved

Quitar el tick en "Auto Select 3G ISP" si está presente y elegir el propio gestor de telefonía en orden del país de pertenencia. Pulsar el icono "APPLY" para confirmar. Seleccionar el modo de utilización del Router VM314

SELECCION MODALITÀ UTILIZZO DEL ROUTER VM314

Wireless MultiMode Router

语言/Language: English Version: WCDMA 2.1.5.1

Status | Mode | 3G | LAN | Wireless | Security | Server | Routing | Admin | Logout

► Mode

Device Work Mode

- ☒ Smart Router Mode
Router will smart select work mode by ethernet port or USB port plugin.
- ☐ 3G Wireless Router Mode
Wireless and ethernet port connect to local network, The embbed 3G USB modem connect to internet.
- ☐ Standard Wireless Router Mode
Wireless connect to local network, The ethernet connect to internet.
- ☐ Wireless AP Client Mode
Ethernet Wireless connect PC or local network, Another Wireless Interface work for a WAN port connect to other wireless AP or router.

APPLY CANCEL

Help

WorkMode: Choice the device work mode, if choice 'Smart Mode', The device will detect wan mode automatically. The priority as: 3G --> DHCP --> PPPoE --> AP-Client. Please input parameters in different mode at first.

Copyright 2013.All right reserved

Seleccionar “MODE” en el menú en la parte alta de la página de configuración. Localizar el modo de utilización deseado que se indican a continuación:

- **SMART ROUTER MODE** El Router localizará automáticamente el modo de utilización en base a la presencia o no del cable LAN: si ha sido conectado el cable, el 3G viene desconectado y el VM314 funcionará como Access point, diversamente el 3G quedará activado y la conexión será utilizada para el tráfico de datos.
- **3G WIRELESS ROUTER MODE** El Router va a permitir la utilización de los datos internet sean ellos Wireless que cableado mediante la conexión 3G.
- **STANDARD WIRELESS ROUTER MODE** Este modo de acceso permite la función DHCP, static address, static IP y PPOE/ADSL. Si el ambiente internet está en modo de entrada dinámico DHCP no es necesario seleccionar el modo de acceso, posicionarse en SMART ROUTER MODE de forma que reconozca automáticamente los ajustes.
- **WIRELESS AP CLIENT MODE** Bien la conexión Wireless que la cableada puede convertirse Access point y el interfaz Wireless se puede conectar con otros AP como cliente.

AJUSTES WIRELESS

Wireless MultiMode 3G Router

Language: English Version: WCDMA 2.1.5.1

Status | Mode | 3G | LAN | **Wireless** | Security | Server | Routing | Admin | Logout

Basic Security Advanced WDS Station List Mac Access

Basic

Wireless Enabled ☒

802.11 Mode 11b/g/n mixed mode

SSID Phonocar VM314

Do Not Broadcast SSID ☐

Channel 2437MHz (Channel 6)

HT Channel 2417MHz (Channel 2)

HT Data Rates Auto

Channel BandWidth ☐ 20 ☒ 20/40

Guard Interval ☐ Long ☒ Auto

20/40 BSS Coexistence ☐ Disable ☒ Enable

40MHz Intolerant ☒ Disable ☐ Enable

Help Basic: Setup AP SSID, 801.11n/h/g mode.

APPLY CANCEL

Copyright 2013.All right reserved

Wireless MultiMode 3G Router

Language: English Version: WCDMA 2.1.5.1

Status | Mode | 3G | LAN | **Wireless** | Security | Server | Routing | Admin | Logout

Basic **Security** Advanced WDS Station List Mac Access

Security

Security Mode WPA-PSK/WPA2-PSK

WPA-PSK

Encrypt Type ☐ TKIP ☒ AES ☐ TKIPAES

WPA-PSK Key 12345678

(8-63 ASCII characters, or 64 hexadecimal characters <0-9 or a-f, A-F>)

Rekey Interval 3600 second(s)

Help Security: Setup wireless AP security, use WPA2PSK, AES is good choice.

APPLY CANCEL

Copyright 2013.All right reserved

AJUSTES DE SEGURIDAD WIRELESS

Configurar el modo de seguridad para el acceso Wireless y la clave deseada

- **WIRELESS ENABLE** Habilita/Deshabilita funciones Wireless
- **SSID** Nombre visualizado en la búsqueda de dispositivos Wireless.
- **DO NOT BROADCAST** No visualiza el Router en la búsqueda Wireless.
- **CHANNEL** Seleccionar un canal de frecuencia para la transmisión de datos.
- **HT CHANNEL** Seleccionar un canal de frecuencia para la transmisión de datos.
- **HT DATA RATE** Seleccionar AUTO.
- **CHANNEL BANDWIDTH** Seleccionar banda del canal.
- **GUARD INTERVAL** Seleccionar AUTO.



DICHIARAZIONE DI CONFORMITÀ alle direttive 1999/5/EC R&TTE
DECLARATION OF CONFORMITY to the directives 1999/5/EC R&TTE

IT Phonocar dichiara che il VM196 è conforme ai requisiti essenziali e a tutte le altre disposizioni pertinenti stabilite dalla direttiva 1999/5/CE.

GB Phonocar declares that this unit VM196 is in compliance with the essential requirements and other relevant provisions of Directive 1999/5/EC.

FR Phonocar déclare que l'appareil VM196 est conforme aux exigences essentielles et aux autres dispositions pertinentes de la directive 1999/5/EC.

D Phonocar erklärt, dass dieser VM196 in Übereinstimmung ist mit den grundlegenden Anforderungen und den anderen relevanten Vorschriften der Richtlinie 1999/5/EC.

E Phonocar declara que el VM196 cumple con los requisitos esenciales y cualesquiera otras disposiciones aplicables o exigibles de la Directiva 1999/5/EC.

EN 60950-1:2006 • EN 31489-1 V1.6.1 • EN 301489-7 V1.3.1 • EN 301489-17 V1.2.1 • EN 301489-24 V1.4.1
EN 301 908-1 V3.2.1 • EN 301908-2 V3.2.1 • EN 300328 V1.7.1



EPA3050B:1996 • EN1122B:2001 • EPA3052:1996 • EPA3060A: 1996 • EPA8270D: 2007 • IEC62321:2008



Il prodotto non deve essere smaltito con i rifiuti domestici. Si ricorda che le pile/accumulatori devono essere rimosse dall'apparecchiatura prima che questa sia conferita come rifiuto. Per rimuovere le pile/ accumulatori fare riferimento alle specifiche indicazioni del costruttore. L'utente dovrà, pertanto, conferire gratuitamente l'apparecchiatura e la pila giunta a fine vita agli idonei centri comunali di raccolta differenziata dei rifiuti elettrici ed elettronici, oppure riconsegnarle al rivenditore. L'adeguata raccolta differenziata contribuisce ad evitare possibili effetti negativi sull'ambiente e sulla salute e favorisce il reimpiego e/o riciclo dei materiali di cui essi sono composti. Per ulteriori informazioni consultare il sito www.phonocar.it

This product must NOT be treated as a domestic waste. Please remember that batteries/chargers must be extracted from the appliance before throwing the appliance away. How to extract batteries/chargers: please follow the manufacturer's specific instructions. The end-user is requested to carry the appliance and its related battery, with no cost, to the municipal waste-recycling-spots for electrical and electronic parts, or take them to the related Retailer shop. Recycling-spots help to avoid negative effects on the environment & health and promote the re-use and/or recycling of the various materials. For further information, please read homepage www.phonocar.it